

If you experience difficulties with viewing this HTML E-mail, please follow this link:  
[http://www.merchandisemart.com/dcdesigncenter/eblast/eb\\_wdc\\_onsite\\_trd\\_05430\\_091306](http://www.merchandisemart.com/dcdesigncenter/eblast/eb_wdc_onsite_trd_05430_091306)



## Come Celebrate at the Design House Opening Gala

Come celebrate on September 28 as The Washington Design Center unveils its 20th Design House in partnership with *Metropolitan Home*. Enjoy an evening of luxury and innovation as The Washington Design Center transforms into an ultra-modern atmosphere and **The Modern With A Capital M** Design House is revealed. Join us as we toast the incredible designers and architects who manifested eight inspiring rooms. And, make bids at the silent auction and help support the National Trust for Historic Preservation who will be recipient of the evening's proceeds.



To celebrate their anniversary, *Metropolitan Home* has developed **Modern 25**. **Modern 25** is an inspiring three-month-long traveling retrospective of the icons and trends which truly define the vision of contemporary design that *MetropolitanHome* has celebrated for 25 years. **The Modern 25** icons will be featured at the opening gala, as one of its first stops throughout the country.

The Design House Opening Party will be held on Thursday, September 28 from 6 to 8 p.m. Tickets are available for \$55 per person. Register online at [www.martreg.com/reg/wdc/dhparty.cfm](http://www.martreg.com/reg/wdc/dhparty.cfm) or call 202.646.6114.



## CONTENTS

[Feature Articles](#)  
[Showroom Announcements](#)  
[Kitchen, Bath & Building News](#)  
[As Seen In, WDC Welcomes & Event Calendar](#)

[Features](#) | [Showroom Announcements](#) | [Kitchen & Bath Center](#) | [Event Calendar](#)

This is an advertisement. If you would like to be removed from this list, please forward the e-mail you received (include the e-mail address to be removed) to: [remove\\_wdc@mmart.com](mailto:remove_wdc@mmart.com) or call 800.677.6278.

**Merchandise Mart Properties, Inc.**  
 Suite 470, The Merchandise Mart  
 Chicago, IL 60654

© 2006 Merchandise Mart Properties, Inc.





VOLUME 12 • ISSUE 5 • SEPTEMBER/OCTOBER 2006  
 300 D STREET, SW, WASHINGTON, DC 20024 • 202.646.6100

## Fendi Casa Opening in September

Fashion and interior design converge when the Fendi Casa showroom opens in September at The Washington Design Center in Suite 610. Exclusive and precious details, a quasi-maniacal attention to each detail, the traditional hand-made manufacturing and the high quality of products make every home creation unique. Not only sofas, armchairs and beds, but also accessories that enrich the range of products. Such materials which make any Fendi Casa product unique are the enriched details stolen from fashion: the great buckles taken from the best-selling Fendi B. Bag, the jewel buttons with the "Palazzo Fendi" (Fendi Palace) print, the nails and even the maxi logo in the new italics version with Swarovsky crystals. See the beautiful home fashions of Fendi Casa, opening soon!

## CONCOURSE EXPANSIONS COMING SOON!

The Kitchen, Bath & Building Concourse level is expanding on both ends! On one end, Clive Christian will be relocating to Suite C-36. In their new expanded showroom they will present the Clive Christian Home Collection, the ultimate in classic British kitchens, studies and baths complemented by the fabrics, china, cutlery, perfume and architectural paneling that only Clive Christian offers. Yours for a lifetime.



On the other end, Foremost Appliances will unveil a brand new showroom in Suite C-16 featuring The Living Kitchen, an innovative new retail initiative that will exclusively showcase up to 75 Sub-Zero refrigeration and Wolf cooking appliances. This dynamic space will allow customers to view full model line-ups side-by-side in a real setting, helping them to visualize how these two brands might complement one another in their own homes. Coming soon to the Concourse level!



### We're Here to Help!

Hello. We're the management team at The Washington Design Center and Washington Office Center. I know you've seen us running around the building but maybe you don't know our names or what we do. I'd like to introduce the people who diligently work to make sure your experience at the design center is the best it can be! If you ever need anything please do not hesitate to call or stop by the office. We are located on the Concourse level of The Washington Design Center, Suite C-21, 202.646.6100.

**Back Row, left to right:** Euton Watson, *Engineer*; Shawn Ellis, *Engineer*; Robert Mackall, *Engineer*; Mike White, *Chief Engineer*; Vincent Still, *Engineer*; Jacob Major, *Property Manager*; Ed Collins, *Acting VP/General Manager*; Milvett Alston, *Senior Financial Accountant*; Terri Washington, *Leasing Assistant*; Glenda Guerrero, *Assistant Property Manager*

**Front Row, left to right:** Belinda Riggs, *Marketing Coordinator*; Julia Chappell, *Director of Marketing*; Kevin Dunnigan, *Security Supervisor*; Jennifer Rabinovitz, *Marketing Manager*; Nicole Frye, *Marketing Coordinator*

## Veranda Sponsors Business of Design Lecture Series

This fall, the **Business of Design** Lecture Series will launch in partnership with *Veranda* magazine. Replacing the former Fall and Spring Design Lecture Series, the **Business of Design** features a comprehensive and extensive line-up of presentations aimed at educating, engaging and enhancing the business you call "design." Sponsoring and headlining the series, *Veranda* magazine and Megerian Rugs present "Antique Versus Reproduction Rugs" on October 3. This feature lecture will be moderated by *Veranda* Senior Associate Editor, Catherine Davis and will include an expert from Megerian Rugs detailing how to distinguish between true antique rugs and antique reproduction rugs, as well as the quality and value behind both types. Following the presentation, visit the J. Asher showroom, Suite 510, for a luncheon and a chance to win an Armenian-made Mahal-design reproduction rug.



Please join The Washington Design Center for the entire *Veranda* Business of Design series, featuring some of the best names in the design industry. Rounding out October is Nancy Corzine on October 10, discussing how she perceives design evolving, and author Martin Wood on October 17, detailing Nancy Lancaster's English Country House style. Featured on November 2 is *The World According to Larry Laslo*, with Larry himself discussing his most recent and celebrated interiors.



Concluding the **Business of Design** series on Thursday, November 16, Brian D. Coleman, author of *Window Dressings: Beautiful Draperies & Curtains for the Home*, and Felicia Baker, owner of Magnolia Designs and book featured designer, present inspirational ideas for creating stunning window treatments for every room of the home. Windows are integral parts of every room's structure and design, whether it's a traditional living room,

bay window, formal dining room with French doors, or just a small bedroom with a single window tucked under the eaves. A book signing and luncheon will follow the presentation.

All lectures are to the trade only and space is limited. Register online at [www.martreg.com/reg/wdc/lectureseries.cfm](http://www.martreg.com/reg/wdc/lectureseries.cfm) or call 202.646.6114.

## Modern With A Capital M Consumer Day

The Kitchen, Bath & Building Design Center will host the Modern With A Capital M Consumer Day on Saturday, October 14, 2006 from 10 a.m.–3 p.m. in partnership with *Metropolitan Home*. Consumer Day will include Design House designers and architects on-hand for free design consultations and discussion behind their respective Design House room inspirations. As well, the day will be filled with lectures, innovative product demonstrations and displays, and shopping in the Kitchen, Bath & Building Center showrooms.



Admission is free and open to the public. Please call 202.646.6114 for more information or visit [www.merchadisemart.com/dcdesigncenter](http://www.merchadisemart.com/dcdesigncenter).

Jay Bremen with Assistant Secretary of Commerce, the Honorable Albert A. Frink



## J. Asher Helps Afghan Rug Industry Succeed in U.S. Market

J. Asher was honored to host a reception on July 18 for a delegation of Afghan rug and carpet producers, at the request of the Assistant Secretary of Commerce, the Honorable Albert A. Frink. The reception was an opportunity for J. Asher to share its experiences in selling fine rugs and carpets to high-end clients in the Washington D.C. area.



This group of Afghan businessmen represented the first official joint U.S. - Afghan government delegation of Afghan rug and carpet producers. The delegation's travels included stops in Atlanta, Washington, Newark and New York. Suite 510, 202.646.1300.

[Home](#) | [Features](#) | [Showroom Announcements](#) | [Kitchen & Bath Center](#) | [Event Calendar](#)



VOLUME 12 • ISSUE 5 • SEPTEMBER/OCTOBER 2006  
300 D STREET, SW, WASHINGTON, DC 20024 • 202.646.6100

## WHAT'S NEW

### Brown Jordan

Brown Jordan is already gearing up for the 2007 season! Most collections on the floor are available for immediate sale at great savings as they make room for next year's new groups. Be sure to stop by the showroom for your new catalog and get your first peek at the new collections for the coming year.

**Suite 601, 202.554.2875**

### Brunschwig & Fils

Fall 2006 at Brunschwig & Fils celebrates France in the 19th century with a documentary collection that



reflects the passions of this period. The paisleys of Northern India and Kashmir inspired

"Fawkes," an explosion of joyous color and exotic motifs. A rare paisley, "Fawkes" is a uniquely open design, a free and exuberant expression of the artist's distinctly avant-garde personality.

Drawing again on the kaleidoscope of 19th-century color, "Kadiri Striped Taffeta" provides an elegant, versatile accent. Come and see Brunschwig & Fils exciting collection!

**Suite 420, 202.554.1004**

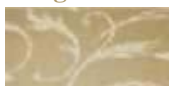
### Cowtan & Tout

Da Vinci, an elegant mid-scale renaissance design in 'Brocatello' construction, is a high relief brocade jacquard with a satin pattern on silk ground. The subtle variation of color in the background adds an antique feeling.



**Suite 423, 202.863.8490**

### Donghia



Jewelry for the Wall, an incredible glass-beaded surface material is



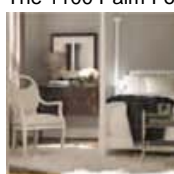
### Ebanista

Complementing their exquisite line of handcrafted furnishings and objects d'art is Ebanista's new collection of exclusive fabrics. Representing just the right combination of sophistication and luxury, these textiles will transform any living space into an elegant abode. Please visit the Ebanista showroom for a private introduction.

**Suite 137, 202.484.5200**

### Edward Ferrell/Lewis Mittman

The 1100 Palm Four Poster bed was inspired by Chippendale and brought to the United States by Lewis Mittman in 1965. This exciting and timely design has been reintroduced and is being premiered in



white lacquer at the Edward Ferrell/Lewis Mittman Washington Design Center showroom.

**Suite 211, 202.646.0282**

### Fabricut at J. Lambeth

Stop by Fabricut to see their newest Vignettes VI series. This collection is overflowing with tons of new product including sophisticated prints, silks, embroideries, decorative wovens and



trimmings. Several other featured patterns are "Wilmette," an exotic floral vase on a silk douppioni, "Gosnell," an elegant paisley crewel, and "Monticelli," a cut-velvet floral scroll embroidery on a

silk douppioni. Featuring a broad color palette ranging from soft greens and blues, to golds and browns, to maroons and bright pinks, these versatile fabrics work for a myriad of projects, and will be sure to complete any room scheme.

**Suite 221, 202.646.0815**

Continental Cloth is a rough-hewn dimensional fabric. Lightly calendared, softly defined, non-rigid diamonds sparkle against a matte finished background in a 2.25" repeat. Woven in France of 38 percent cotton, 31 percent linen, 31 percent viscose, this sturdy upholstery fabric has withstood 40,000 rubs on the martindale test. Colorways are extremely inviting... beige, turquoise, brown, green, red and off white.



Raphael Chenille, an exclusive Hinson fabric, is comprised of monochromatic tone-on-tone interlaced squares in beige, green, sage or tan. Colorways also include a single dramatic contrasting black and tan. Its scale reinforces the design. Carefully delineated squares are woven of chenille. They have a lovely velvety hand and subtle sheen...squares are woven against a ribbed bouclé background for visual impact. Chenille is a mainstay in the ever-evolving Hinson collection. Raphael Chenille adds sophistication and style.

**Suite 410, 202.646.0260**

### Holly Hunt

Introducing the Listen Club Chair by John Hutton for The Holly Hunt Collection. The new John Hutton includes elegantly lined sofas and chairs, as well as linear case pieces which combine contemporary flair with a classical foundation producing truly original designs. Soft curves and unique materials such as Makore, make these pieces classic and clean. Visit the new Holly Hunt entrance gallery in September.

**Suite 719, 202.554.2910**



### Houlès

As the weather cools, and the leaves begin



now available in even more exiting incarnations. Maya Romanoff continues the Bedazzled in Relief program, a process that involves taking any piece of artwork or design, in any original format, and creating a custom mural by "bedazzling" it in chosen colors, sizes and layout of beads. Equally brilliant, the Bedazzled Bijou, is a covering of large glass beads artfully arranged in a traditional marquetry design. The non-beaded background enhances the reflectivity of the glass beads.

Texturally refined with a hint of raw elegance, Donghia's latest textile ARTISANAL makes a bold statement. Handcrafted in India and woven from Tussahsilk, the fabric offers a gutsy hand with a soft, subtle shimmer. Circular appliqués in contrasting neutral colors have been stitched to the base cloth for a hand-made appearance. ARTISANAL is available in two colorways: Natural and Bleached.



The Donghia textile team has done it again...designed a useable and luxurious new collection of outdoor/indoor textiles. The Playa collection includes four patterns inspired by the motifs and elements of beach culture—saturated colors, vibrant stripes and the luxury of the plushiest beach towels.

**Suite 503, 202.479.2724**

**DSA Associates**

Come check out what's cool at DSA Associates for the fall season. Brueton, known as having an excellent reputation for its crisp, classic modern style that remains timeless, has recently introduced six new products for their extensive collection. The James T Table is definitely a showstopper, with its tubular stainless steel frame welded, ground and polished into a seamless unit. The macassar ebony top is divided into four sections with straight edge detail. Of course all Brueton products can be custom-sized to meet the criteria of your projects. Brueton is also embarking on a new venture and offering well-handcrafted carpets in the finest New Zealand wool. These new designs offer outstanding beauty and endurance with comprehensive design flexibility for numerous projects. Let DSA introduce you to the 20+ designs.

**Suite 301, 202.863.0350**

**Duralee**

Silk weaving is a marriage of nature and technology, which can truly be considered an art. With this in mind, Duralee has released Silk Road, named after the famous trans-continental trade route linking China to the west through

**Farrow & Ball**

Farrow & Ball are delighted to announce the launch of their latest wallpaper collection: The Grisaille Papers. Beautifully printed by Farrow & Ball craftsmen, "The Grisaille Papers" offer 24 designs, all printed in a stunning sepia grey colourway. Following the popular black and white colourways in existing collections, this new collection has the diversity of pattern and the hallmark Farrow & Ball depth of colour and surface texture, which is achieved through the combination of traditional printing methods using the finest Farrow & Ball waterbased paints.

**Suite 622, 202.479.6780**

**Grange**



Grange is excited to introduce the new collection Provencal. The rich colors and sunlight of Provence have inspired many

artists and travelers—this warm palette can be found in the finishes of the new Provencal collection. The furniture in this collection is finished using traditional techniques, and is available in a variety of colors. Provencal reflects a way of life that embraces the delights, warmth and passions of this region. Come see this new collection arriving in September.

**Suite 521, 202.488.0955**

**Hines & Co.**

Malabar introduces *Kinder World*, a collection for kids and designers with imagination. This is no ordinary fabric collection; intricate embroideries and appliqués are used in 11 designs on themes such as animals, sports, sea creatures, hot air balloons and adorable handbags. Mix it up with the coordinating Candystick collection which includes 10 zingy hand-loomed stripes in bright pastels, suitable for drapery and upholstery. An added bonus is that these great new patterns work well with any of Malabar's existing hand loomed plains. Transform a child's room or your next project into a whole new world with a little help from Malabar at Hines & Co.

**Suite 310, 202.484.8200**



**Hinson & Company**

Hinson & Company introduces the new Soft Geometry fabric collections for fall. It is highlighted by geometric squares; diamonds, circles, grids, triangles and herringbones. Highlights are Dix Bay Twill, Equinox, Danieli and Metropole textures, Raphael, Trianon and Raj Chenilles, Continental and Morgan cloths and sheers.

to fall its definitely time to shine! The Opaline collection is the perfect trimming ensemble to add glamour and luster to any room. This collection includes several



beaded tiebacks and a glass bead tassel fringe—all in 16 rich and radiant jewel inspired colorways.

In October, Houllès introduces another jeweled collection, Venezia. The Venezia is a Murano inspired glassware

collection of contemporary and fashion tiebacks made of hexagonal glass and satin beads. Please stop by the showroom to see the entire new collection!

**Suite 404, 202.488.1621**

**J. Lambeth**

This fall at J. Lambeth come see an exciting new collection of R. Jones upholstery floor samples in warm and vibrant fabrics and trims. Additionally, J. Lambeth has new designs from Bausman, makers of fine bench made furniture in walnut and alder wood.

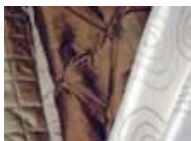


The new fall collection from small Scottish company Voyage is full of vibrant color and flair worth viewing! Patterns bear character and design reminiscent of the retro floral designs of the 1950's.

Hartmann & Forbes, known for their use of environmentally sensitive products launches the Papyrus-Weave Collection. These weaves are comprised with a modern interpretation of designs from thousands of years ago including Himalya, Pharaoh, Zen, Tartan and many more. Each texture is woven from natural jutes and pulp fibers and is hand finished. The collection also includes the Naples series of wall coverings, which adds a soft and organic quality to walls while complementing the natural window coverings.



From Watts of Westminster's Archives: CLOTHS created in the spirit of the



the west through open trade of silk, spices, and other precious materials while bringing people of different

cultures together. Silk Road is a collection of seven color books of silk designs in patterns and colors that range from transitional to traditional with an emphasis on sophistication. **Suite 317, 202.646.1282**



**CLODDOCK**—created in the spirit of the English Arts & Crafts movement with attention to quality and stylization, woven on an organic linen ground. **Suite 117, 202.646.1774**

**Jayson Fifteen**

Bigger is better! With that in mind, Jayson Fifteen is moving to a larger space on the first floor. The new showroom, suite 111, (diagonally across from J. Lambeth) will be 30 percent larger than the current space – more room, more furnishings, more lines! Look for Jayson Fifteen on floor one, by October 1st! **Suite 320, 202.479.4114**

**Julia Gray**



Unique sale at Julia Gray! No need to hunt! You'll find an additional 30 to 50 percent off at Julia Gray. As they make room

for new inventory, you'll discover antique chandeliers, antique lamps, selected floor samples, artwork and Italian import furniture at remarkable prices. This is a rare and irresistible sale. If the piece fits...you'll bring home a treasure. **Suite 408, 202.554.6021**

**Kravet Fabrics**

The Joseph Abboud brand embodies sophisticated American style for traditional menswear. Joseph Abboud for Kravet Collections combines one shade of the earth's rich palette with another. Rendering these lush hues in silk jacquards, chenille dobbies, printed velvets with faux suede elephant skins, these diverse constructions find complements in such diverse patterns as intricate paisleys and delicate organics. Kravet Collections...dressing your home interiors in the finest apparel imaginable. **Suite 540, 202.479.0144**



**Lee Jofa**

Following the success of its first outdoor performance fabric collection, Lee Jofa introduces a sequel line, SOLARIUM II, this fall. Where the mood of the debut collection was subtle and quiet, the current collection is full of joie de vivre and color. The theme is By-the-Beach, with allusions in both imagery and



**Niermann Weeks**



Reflections of the fall become clear with mirrored furniture. Two mirrored side tables and a glamorous bed bridge the gap between modern and traditional styles. All are finished in Venetian silver leaf. **Suite 701, 202-488-**

**1220**

**Odegard**

In Louise Nesting Tables from Odegard the craftsmanship and finish become integral parts of the piece. Paul Mathieu has combined traditional Indian metal clad wood and the artisan's hand. **Suite 519, 202.484.5888**



**Pindler & Pindler**



Pindler & Pindler's Signature Exclusive Stripes with Style collection includes five modern silk blend stripes in cutting-edge colorations. These designs are practical as well as fun; many of the stripes meet 45,000 double

ruhs. **Suite 520, 202.488.1805**

**The Rist Collection**

Discover all the introductions at Rist like the new Mark Christopher collection of upholstery and the dazzling Art Deco pieces in Burr Elm and Bronze from Restall Brown and Clennell. **Suite 102, 202.646.1540**



**Robert Allen/Beacon Hill**

A first-ever category of drapeable printed and woven fabrics with modernist sensibilities, *Robert Allen Modern Library Multi-Purpose* is an exciting new aspect of the modern lifestyle. The colors range from *Domino-Flint-Walnut* to *Tide-Wasabi-Mango* with embroidered suede, hand-block print effects, embossed metallics and Mid-



blue; *Petal*, a delicate pink that hovers on the edge of cream, and *Rhubarb*, a rich red which anchors the group. All of the hues are pure and clear in tone, beautifully accentuating designs including kimono-inspired florals, puckered damask frames, needlepoint-style weaves and luxurious solids. To view the exquisite collection of upholstery fabrics, please visit Robert Allen | Beacon Hill. **Suite 623, 202.863.0404**

**F. Schumacher & Co.**

From fabrics to wallcoverings, Schumacher has you covered for fall with versatile new products. Silk stripes take on



new character when inspired by classic screen actresses including Audrey Hepburn, Grace Kelly and Sophia Loren—from fine lines to bold strokes, stripes

have never looked so glamorous! For a different look that is still a showstopper, consider Damask Library, a beautiful collection of hand printed wallcoverings in soft neutrals and rich colorations, accented by metallic, transparent and gloss effects. Nonwoven and natural textured grounds create surface interest in these statement damasks. Please visit Schumacher to view these and other exciting new textiles. **Suite 523, 202.646.0610**

**Stark Carpet/Old World Weavers**

Stark Wallcovering introduces Americana, a unique collection of hand-painted scenic murals that showcases historical moments, patriotic themes, national monuments and landscapes of the United States. Scenic murals have regained importance within our interiors. Rich in artistry and detail, they serve as works of art that



with allusions in both imagery and palette to the tropical leisure of holiday hot spots like St. Tropez and Palm Beach. Fresh linen whites meet up with aquatic blues, reef pinks and corals, sapling greens, and bronzed sand tones in a range of easy colloquial stripes and checks and charming scenic prints.

**Suite 518, 202. 863.1300**



### Michael-Cleary

New Minton Spidell pieces have arrived! Stop by the Michael-Cleary showroom to see more than 25 new pieces.

**Suite 401, 202.488.9787**



Century Modern-inspired geometrics. The latest *Upholstery* offering from *Modern Library* is a perfect pairing with the *Multi-Purpose* collection, offering a softer side of modern in *Cameo-Shell-Spice*, *Celadon-Oasis-Spring*, and *Wheat-Pecan-Barley* hues. The latest from *Robert Allen Modern Library* is the source for every fabric to complete an entire transitional design project or just add a chic contemporary touch.



The latest Color Book collection from Beacon Hill features dynamic constructions that redefine luxury in transitional patterns and modern treatments of traditional designs. Introduced are five trend-forward color stories, which harmonize beautifully with one another: *Canary Green*, a warm, yellow-infused green; *Clementine*, an updated take on coral; *Glacier Blue*, a light spa

color palette that make dramatic interior statements. Our passport to the world, scenic murals have always focused on 18th and 19th century Europe and Asia, never before featuring America. Inspired by the absence of American murals and our country's rise in patriotism, Stark Wallcovering has developed Americana—the first collection of American scenic murals. Two designs launch this exciting collection, Presidential Parade, a "birdseye" view of a parade's fanfare and Lincoln's Washington, a panoramic view consisting of nineteen panels from our Capitol's surround (shown-panel one). Coming on the scene are new designs including murals of Indian reserves, Western Prairie land, the American South, as well as Boston Harbor. Americana joins the ranks of European and Asian scenic murals at Stark Wallcovering, together offering a perfect package for creating a room with a view. See the scenic panel in The Washington Design Center entry for the month of October.

**Suite 726, 202.484.4566**

### WILLEM SMITH

Couple the most luxurious aniline leather with first-rate ergonomics and a chic profile and 'que barbara!' Sit the Caballero Chair along with its cohort the Hamlet Table at WILLEM SMITH, today.

**Suite 322, 202.554.9600**



[Home](#) | [Features](#) | [Showroom Announcements](#) | [Kitchen & Bath Center](#) | [Event Calendar](#)



VOLUME 12 • ISSUE 5 • SEPTEMBER/OCTOBER 2006  
300 D STREET, SW, WASHINGTON, DC 20024 • 202.646.6100

## KITCHEN, BATH & BUILDING CENTER

Open to the Public and Trade • Monday-Friday, 9 a.m.-5 p.m. • Saturday, 10 a.m.-3 p.m. • [www.kitchenbathcenter.com](http://www.kitchenbathcenter.com)



### Architectural Ceramics

Architectural Ceramics introduces The Goldstone Collection by Artistic Tile. Artisans use elegant marble as the canvas to etch lines and minute images. Gold leaf is then applied to the details.

**Suite C10, 202.554.8719**

### Studio Snaidero

In the kitchen with Dornbracht...having conquered the bath with exceptional faucet designs, Dornbracht is headed into the kitchen with its most impressive culinary collection yet. Among the new offerings is Elio. Faithful to Dornbracht's modern aesthetic, the look is sleek and noble, the neck and spout form an elegant and subtly rounded curve where they meet. It's minimalism reduced to its most basic terms. The single lever version with extendable spray fulfills a variety of tasks from washing vegetables to tidying up with ease. When not in use this component spray snaps neatly inside the fitting and, at the touch of a button, easily transforms from aerator to spray. Elio is offered as a single-lever (which can be configured either left or right) or as a two-hole mixer. Designed by Dornbracht's prolific collaborator, Sieger Design, the series is available in polished chrome or platinum matte. Now available at Studio Snaidero!

**Suite C20, 202.484.8066**



### Foremost Appliances

Visit Foremost Appliances and see KitchenAid's new sleekly designed 42" built-in bottom-freezer refrigerator featuring French-door styling that is overlay panelready to match any kitchen décor. Also available in brushed stainless steel, it offers the widest refrigeration space and largest capacity available of its kind. Other great features include surprisingly wide-angle maneuvering and an open interior design that allows for full-width access and room to store large platters, because there's no middle divider.



**Suites C01 & C19, 202.646.0885**



### Haifa Inc.

Please stop in the showroom and discover Haifa's new European and Mid-Eastern limestone available for application in both exterior and interior flooring/decking tiles. The limestone comes in honed, antique, flamed and brushed finishes, slab material, and in various finishes for countertop material. Exterior cladding is also available in a variety of custom finishes. While Haifa maintains tens of thousands of square feet of inventory within U.S., they also special order at no additional cost. Discover for yourself why Haifa Inc. "truly does have the world's most exceptional stone." Contact Thurston Cantrell for a personal appointment.

**Suite C18, 202.484.5103**

[Home](#) | [Features](#) | [Showroom Announcements](#) | [Kitchen & Bath Center](#) | [Event Calendar](#)



AS SEEN IN...

**Architectural Digest**  
Stark Carpet  
June 2006

**House & Garden**  
J. Lambeth  
September 2006

**Architectural Digest**  
Ebanista  
September 2006

**Veranda, Shelter Interiors, Interior Design, & California Homes**  
Pindler & Pindler

**Washingtonian Architectural Ceramics**  
September 2006

**Architectural Digest**  
Haifa

### EVENT CALENDER

**THURSDAY, SEPTEMBER 21** Fall 2006 *Metropolitan Home* Design House Press Preview Day

**THURSDAY, SEPTEMBER 28** Fall 2006 *Metropolitan Home* Design House Opening Party  
By Invitation Only  
For more information, please call 202.646.6114.

**FRIDAY, SEPTEMBER 29** Fall 2006 *Metropolitan Home* Design House open to the public during regular business hours.

**TUESDAY, OCTOBER 3** Business of Design series: *Veranda* & *Megerian Rugs* present "Antique Versus Reproduction Rugs" featuring Senior Associate Editor, Catherine Davis, 11 a.m.

**TUESDAY, OCTOBER 10** Business of Design series: Nancy Corzine, 11 a.m.

**SATURDAY, OCTOBER 14** Fall 2006 *Metropolitan Home* Design House Consumer Day, 10 a.m.–3 p.m.  
For more information, please call 202.646.6114.

**OCTOBER 16-22** High Point International Furnishings Market, High Point, N.C.

**TUESDAY, OCTOBER 17** Business of Design series: Martin Wood discussing Nancy Lancaster and the English Country House style, 11 a.m.

**THURSDAY, OCTOBER 26** CEU: Understanding English Period Furniture. 9:30 a.m.-5:30 p.m. The Washington Design Center Design House Conference Room. IDCEC Course #4420. DCAApproved—0.6 CEUs. MD Approved—0.5 CEUs. Presented by Beverly Vosko, Allied Member ASID. Registration materials will be posted on [www.asiddcmetro.org](http://www.asiddcmetro.org) or can be requested by calling 202.488.4100.

**THURSDAY, NOVEMBER 2** Business of Design series: Larry Laslo, 11 a.m.

**THURSDAY, NOVEMBER 16** Business of Design series: Brian Coleman author of "Window Dressings," 11 a.m.

**SATURDAY, DECEMBER 3** Georgetown Jingle at The Four Seasons

**SATURDAY, DECEMBER 16** Fall 2006 *Metropolitan Home* Design House closes

### WDC WELCOMES

**Architectural Ceramics**  
Suite C10  
Architectural Ceramics

**Ebanista**  
Suite 137  
Please join Ebanista in

**Pindler & Pindler**  
Suite 520  
Pindler & Pindler

**Stark Carpet/ Old World Weavers**  
Suite 726

### AVAILABLE POSITIONS

Croce has an opening for a full-time sales associate. Candidate must have

welcomes Leon Asp to The Washington Design Center showroom. He comes to Architectural Ceramics from Kreiss Collection (in DC and Florida) with more than 20 years of design experience.

welcoming Mauricio Guerra as the new outside sales representative. Mauricio brings many years of experience in the home furnishings industry. Please stop by Ebanista to welcome him.

congratulate Annette Alston on her promotion to showroom manager. Annette has been an exemplary Pindler employee since 2000. Pindler & Pindler thank her for her service and wish her great success in her new position.

Kristi Richards joins Old World Weavers as the librarian. Many will recognize Kristi from her previous employment in the building. Come by and welcome her back.

previous sales experience and industry-related work is a plus. Please contact Joann Prather at 202.863.2291 or fax your resume to 202.863.2293.

[Home](#) | [Features](#) | [Showroom Announcements](#) | [Kitchen & Bath Center](#) | [Event Calendar](#)