

If you experience difficulties with viewing this HTML E-mail, please follow this link:
http://www.merchandisemart.com/dcdesigncenter/eblast/eb_wdc_onsite_trd_05426_060906



VOLUME 12 • ISSUE 3 • JUNE 2006
 300 D STREET, SW, WASHINGTON, DC 20024 • 202.646.6100

The Washington Design Center & Metropolitan Home present the Fall 2006 Design House

This fall, The Washington Design Center (WDC) is partnering with *Metropolitan Home* magazine for the benchmark 20th Design House. *Metropolitan Home* is the nation's leading contemporary design magazine featuring modern inspirations for the home and garden.

Opening to the public on September 29, 2006, the design house, appropriately themed "Modern with a Capital M," will showcase modernism with D.C. flare. The design house is a vehicle to demonstrate innovation and luxury with products featured exclusively at The Washington Design Center. Together, *Metropolitan Home* and The Washington Design Center will contribute to making the "Modern with a Capital M" design house another fabulous installation of Washington's most inspirational decorator show house.

Showroom Expansions and Renovations at the WDC

Showroom expansion and renovation completions were the trend in April. DSA Associates, Edward Ferrell/Lewis Mittman, Henredon Interior Design Showroom and Michael-Cleary all recently completed their ongoing showroom renovations and expansions.

DSA Associates undertook an exterior makeover, which resulted in a new showroom entrance. Edward Ferrell/Lewis Mittman renovated its showroom, which currently has many pieces from the Jamie Drake Collection on display. Henredon Interior Design Showroom is newly redesigned and features an extensive collection of Barbara Barry Realized by Henredon. As well, Michael-Cleary added a "new-side" to its fourth-floor showroom. Stop by these showrooms and check out their new and improved spaces.

Acclaimed Designers Visit the WDC in April

In April, The Washington Design Center hosted two acclaimed interior designers. David Easton, known for practicing residential design and customarily embracing a traditional aesthetic, visited Washington to discuss the inspirations for his latest collection of wallpapers for Lee Jofa, David Easton II for Cole & Sons.



On April 18, Jamie Drake presented "The New American Glamour" at the first in a series of three Spring 2006 Design Lectures. Drake presented his "New American Glamour" as he examined the elements that connect all of his interiors: Luster, Texture, Color, the Curve and the Mix. Both New York-based designers were well received and brought a wealth of knowledge, intriguing discussions and their own eclectic styles to The Washington Design Center.

CONTENTS

[Feature Articles](#)
[Parties Wrap-Up & As Seen In](#)
[Showroom Announcements](#)
[Kitchen & Bath News](#)
[Available positions, WDC Welcomes & Event Calendar](#)

[Home](#) | [Features](#) | [Wrap Ups](#) | [Showroom Announcements](#) | [Kitchen & Bath Center](#) | [Event Calendar](#)

This is an advertisement. If you would like to be removed from this list, please forward the e-mail you received (include the e-mail address to be removed) to: remove_wdc@mmart.com or call 800.677.6278.

Merchandise Mart Properties, Inc.
 Suite 470, The Merchandise Mart
 Chicago, IL 60654

© 2006 Merchandise Mart Properties, Inc.



WDC Is Reaching Out To Up-and-Coming Designers

By Julia Chappell

The Washington Design Center is blessed to have so many prominent designers shop our 43 showrooms on a regular basis. For those dedicated to our center, we offer privileges such as designated parking, designer index boards, Mart Cards for easy access, a Designers in Print recognition board, lecturers and workshops for continuing education and VIP invitations to social networking events. But what about all of the new interior designers who are starting design careers? Do they know the benefits of shopping The Washington Design Center?

The Washington Design Center is making a commitment to our valued showrooms and to aspiring designers by developing a "New Designers Forum" with the goal of gaining insight into these energetic new minds. We will find out how to reach new designers, what will attract them to the center, what types of programs will help nurture their careers, how they shop and what they are looking for and how to retain them as loyal customers. If you know of any new designers that would be interested in joining the New Designers Forum, please contact me at jchappell@mmart.com.



Washington Spaces Design House Room Makes Magazine Cover

Susan Gulick of Susan Gulick Interiors dons the cover of the Spring 2006 *Washington Spaces* magazine featuring her Urban Space as depicted in the current design house. The Urban Space, inspired by urban Washingtonian living, combines sleeping, dining, working and conversation into one functional room. The magazine features a four-page write-up on all of the rooms in the Design House. Furthermore, the media coverage and numerous tours of the Design House have led to wonderful new clients and sizeable jobs for participating designers. Please stop by the Spring 2006 Design House, open through June 24, to see all 10 beautiful *Washington Spaces*.



Ed Collins Joins the WDC

Ed Collins will serve as Interim General Manager for both the Design Center and Office Center properties. Ed comes to Washington from Chicago where he served as Vice President of 33 North Dearborn, a Merchandise Mart Properties, Inc. (MMPI) property that was recently sold. Ed brings a wealth of expertise in the residential furnishings industry to his new role. From 1995-2002, Ed served as leasing director and vice president of leasing for residential and casual furnishings at MMPI. Please join The Washington Design Center in welcoming Ed to the nation's capital.

[Home](#) | [Features](#) | [Wrap Ups](#) | [Showroom Announcements](#) | [Kitchen & Bath Center](#) | [Event Calendar](#)



VOLUME 12 • ISSUE 3 • JUNE 2006
 300 D STREET, SW, WASHINGTON, DC 20024 • 202.646.6100

Capital Cooks Party



Marilyn DeMent of Dezahra and Tod Herbers, publisher of *HOME & DESIGN*



Julia Chappell and Belinda Riggs of the WDC with Sharon Dan, editor of *HOME & DESIGN*

Not Your Same Old Parties

A combination of fabulous décor, music and guests made for two spectacular Design Center parties - Design House Grand Opening and Capital Cooks! Both parties reflected the new hip flair evolving at the Design Center. With a transformed lobby, mood lighting and delicious food, the party standard for The Washington Design Center is on the rise. Please join the WDC for its next extravagant event - these are not your same old parties!

Design House Grand Opening Party



Mike Burke of Eastern Marketing, Bill Brennan of Foremost Appliances and Wayne Gurley of Miele



Debbie Wiener of Designing Solutions



Matt Costigan of Michael-Cleary and Thomas R. Walsh



Matt Swingly and Cheslea Killin of McMaster Wallace Interiors

[Showroom Announcements >>>](#)

[Home](#) | [Features](#) | [Wrap Ups](#) | [Showroom Announcements](#) | [Kitchen & Bath Center](#) | [Event Calendar](#)



VOLUME 12 • ISSUE 3 • JUNE 2006
 300 D STREET, SW, WASHINGTON, DC 20024 • 202.646.6100

WHAT'S NEW

AmericanEye

AmericanEye is Spring-cleaning! Stop in for red-tagged items, marked down to make room for new items coming in from the High Point Market! There are a limited number of upholstery and casegood pieces. These items are floor samples available for immediate pick-up. The spring sport season is also alive. See great baseball and tennis collections to finish that family room, kids room or second home. AmericanEye is also featuring Lee Industries Coverall Collection. Nothing says summer more than a slip covered sofa. But, this slip



covered collection works all year in traditional, contemporary and transitional environments. These are not your grandmothers slipcovers! Stop in to see the fabrics offered by Lee (including Sunbrella and Pine Cone Hill) or bring your own COM to finish your design.

Suite 511, 202.554.5744



Arc-Com Fabrics

The Arc-Com Design Studio expands its Woven Crypton® Collection with the introduction of the organic transitional design Jardin. Exuding a graceful and undulating botanical motif, Jardin is available in a fresh and versatile color palette including a soft green, brilliant orange and soothing light blue.

Arc-Com Fabrics in collaboration with designer Patty Madden

introduces its new vinyl upholstery pattern, Willow. Inspired by the delicate weeping willow tree, this stylized organic design exudes a calming sense of movement with its slender leaves and intertwining stems. Available in an exquisite palette of soft earthy tones, Willow is a perfect fit for multi-market use.

Inspired by the intricate maze of veins that comprise a single leaf, Arc-Com in collaboration with designer Patty Madden introduces its new vinyl upholstery pattern, Sylvan. Displaying an organic motif with great universal appeal. Sylvan

Donghia

The Literary Collection features five woven and coordinating textiles, each named after a famous travel writer. Inspired by traditional Moroccan rug designs with symmetrical geometric patterns and vibrant colors, the collection offers a modern edge and universal appeal. (The image is of BOWLES and NERUDA from the Literary Collection).



The tightly upholstered seating pieces and loose soft cushions, inspired by the classic Villa Collection, are given a new dimension by placing them atop an open, wooden base. The adaptable and airy base creates clever storage space for one's everyday lounging needs. The collection offers a club chair that contains a hidden swivel for additional resourcefulness in the modern interior.

The armless Open Villa Collection is available as a sofa, a club chair with ottoman and an occasional chair.

Suite 503, 202.479.2724



DSA Associates

The renovation of DSA Associates is complete. Come see the new space!

DSA Associates has added the sleek clean look of Antoine Proulx Furniture to the showroom. Antoine Proulx offers unique pieces that bring sophistication, craftsmanship and modern luxury to any space. Every piece of wood in Antoine Proulx has a cashmere-like luxury to it that is exquisitely smooth, perfectly finished and eye-catchingly luminous. Designers and clients have more than 17 veneer choices (and five steel options) for each design. Metal is often used as the support material that comes to proudly



Hinson & Company

Chenille has become wonderfully upscale and elegant. A prime example is Bayer, Hinson's stunning geometric design

comprised of pom-like contrasting rectangles against a waffle-weave chenille background. The effect is well defined and glamorous in intriguing colorways of white or white/beige, chocolate or wine/brown and green or straw/off white.

Textured fabrics are also fabulous this season. From Hinson comes Aegean Texture, a precise, classic Greek key design that is defined and dramatic. The striking fabric is primarily cotton and has the look of a heavyweight tapestry. Colorways have visual pop with blue, gold or tan/off-white; brown/black, brown/navy, black/gold, red/cream, green/green.

Suite 410, 202.646.0260

Holly Hunt

It's time to break out of the winter blues and have fun in the sun! Perennials Outdoor Fabrics™ introduces the Aquaria Collection, as carefree and replete with joy as days spent under the sun.



This new palette features brilliant use of vivid colors such as Sea Salt, Sand, Sunfish, Sunshine, Shrimp, Conch, Citrus, Cove, Anemone, Gecko, Grotto and Nautilus. It presents textured beauty and comfort in Shoreline Stripe, Spongy, Very Terry and Nubby, as well the beautifully durable Sail Cloth and Canvas Weave. Each providing a refined backdrop to the new passionately fun Holy Mackerel! print. Ideal for high-traffic use, Perennials 100 percent solution-dyed acrylic fabrics provide soil, mildew and UV-resistant options suitable for any weather or venue.

Suite 719, 202.554.2910

Houlès

A combination of pure, contemporary design and warm accents of leather and wood, Houlès presents the Melia Collection. This

is ideal for healthcare, hospitality and corporate settings, available in an exquisite palette of soft blue greens, bright reds and oranges as well as sophisticated neutrals.

Suite 506, 202.863.2900



Brown Jordan

Don't let the weather fool you! July 4th is right around the corner! Hurry and place your order to insure delivery for those summer parties and lazy summer nights!

Suite 601, 202.554.2875

Brunschwig & Fils

Out for the summer season is a new collection from Kirk Brummel, complete with lots of punchy colors to spice up any room and a variety of textures for your comfort, there is something for everyone in the Kirk Brummel collection! Some of the Kirk Brummel fabrics can be seen in the Spring Showhouse on the concourse level of the Design Center in Joseph Ireland's room.

Suite 420, 202.554.1004

Cowtan & Tout

Cowtan & Tout's varied and versatile range includes the taffeta stripes of 'Deauville' and chenille stripes of 'Menton,' the sumptuous damask of 'Ritz', the two-tone, neat diamond motif of 'Nice' and 'Cannes' offers a soft, plain chenille. Please contact the showroom for more information.

Suite 423, 202.863.8490



Support material that seems to proudly hold up the wood forms like an easel showing off a finely painted canvas.

Suite 301, 202.863.0350



Ebanista

Ebanista is proud to present new additions to its art collection. Exclusive oil paintings by an award-winning artist Jaqueline Kamin draw inspiration from landscapes that have permeated her work and won her grand recognition. Ebanista's collection now also includes German antique botanical prints from the early 1800s. These are a subtle and elegant addition to any living space.

Suite 137, 202.484.5200



Fabricut

Come and visit the Fabricut showroom to see "Metropolitan Sheers," a dazzling and unique collection of double weave sheers including floral, scrolls, checkerboards and stripes. These radiant voiles come in vibrant colors and will work in either a contemporary or traditional setting. Easy, breezy and just in time for the summer!

Suite 221, 202.646.0815



Grange

St. Barth, one of Grange's outdoor collections, incorporates a sense of comfort and relaxation. It features lightweight and weather-resistant aluminum frames wrapped with Hularo®, a durable synthetic fiber similar to natural wicker. The result is a product that is impervious to heat and cold and will not fade or crack.

Suite 521, 202.488.0955

Henredon Interior Design Showroom

Experience a whole new level of luxury at the newly redesigned Henredon Interior Design Showroom. Featuring an extensive new collection of Barbara Barry Realized by Henredon.

Suite 225, 202.554.3340



high-end and elegant collection features 1 3/8" poles in five different patinas: mahogany, ebony, antique silver, antique gold and white. All finials and accessories are in solid brass and offer three finishes: brushed nickel, black nickel and antique brass. The Melia collection is technical, original and decorative and will be perfect for pure and opulent decors. Please stop by to see and feel the stunning quality of this collection.



Suite 404, 202.488.1621

J.Asher

J. Asher proudly welcomes to its staff Jen Chappell, who brings years of sales and management experience in interior design, fine art and photography. Her addition to the family broadens J. Asher's ability to serve you through the creative process, which now takes place in the new showroom, a luxurious environment that represents an extension of your lifestyle. This is just one way J. Asher adds value to the purchasing experience. Another way is by bringing all the leading vendors in the high-end handwoven carpet and rug industry—Tufenkian Artisan, Atelier Lapchi, Asmara, Megerian—to one place. Their aggressive pricing program is yet another way they add value. At J. Asher, they are committed to adding value every step of the way and to making every facet of your experience with them extraordinary.

Suite 510, 202.646.1300

J. Lambeth & Co.

Hartmann & Forbes launches an innovative line of environmentally sensitive products for your home with 14 pioneering "organic weaves" in concert with their "Project-Green™" initiative, promoting environmentally sensitive window coverings. Utilizing ancient methods and organic materials in their hand-loomed products sets Hartmann & Forbes apart from the rest of the industry.



Giati is pleased to introduce Nuance, a collection inspired by nature and the human form and subtly infused with Art Nouveau influences. Each sleek, organic piece is hand constructed and powder-coated for long-lasting beauty and outdoor durability. Translucent glass tabletops are light and sophisticated. Structural fabric sling seats are crafted of breathable mesh, in a rich variety of color and texture.



Enhance garden spaces and interior rooms with Stoneyard, Inc.'s beautiful and eclectic line of cast stone products, which add great presence and timelessness to both class and contemporary settings. Choose from a selection

of twelve stone-like finishes to complement any design scheme. The same fabulous China Seas fabrics that have brightened interior spaces with dynamic, abstract patterning and dazzling,



Hines & Co.

Samara, patterned after the embroidered drawings of the Suzanis (famous fabrics of the Uzbekistan nomadic tribes which were used to decorate the "yourtes"— marriage gifts), this elaborate jacquard is a fusion of matters and colors. This pattern is available in five rich and saturated tones.

Suite 310, 202.484.8200

clear color are now available on Sunbrella ground. Illuminate any porch, veranda, poolside or nautical setting with these stylish and playful textiles.

Suite 117, 202.646.1774



Julia Gray, Ltd.

Don't be bamboozled by bamboo! Julia Gray's bamboo furniture may trick your eye but not your aesthetics. They have combined exquisite hand-painted chinoiserie decoration with handsome faux bamboo, making this armoire a dynamic focal point. Create an entire suite with nightstands, dressers, desk and bed or simply choose an accent piece. Fine design and good taste are never baffling at Julia Gray.

Suite 408, 202.554.6021



Kravet Fabrics

With a new line in each of its three major price points—Couture, Design and Basics— Kravet has dramatically enhanced its presence in the field of windows. The year's highlight is the splendid, seven-book color collection from Kravet Couture called Sheer Impressions. With innovative sheers made from damier, cotton, satin and wool as well as lightweight chenilles and wools, this collection will provide you with an unparalleled array of options,



With five stunning prints and twice as many weaves, this collection presents as splendid unity of flair and artistic vision.

Suite 518, 202.863.1300

Niermann Weeks

Niermann Weeks represents lines offering sophisticated outdoor textiles far beyond predictable styles. Savel, Nomi and Alaxi offer prints, solids and plaids so gorgeous; you'll want to use them indoors too!

Suite 701, 202.488.1220

Odegard

Inspired by the curvaceous lines of classical Louis XV shapes, The Stephanie Odegard Collection introduces Paul Mathieu's Louise Collection of handmade furniture. Please join Odegard in suite 519 to experience this new collection.

Suite 519, 202.484.5888



Michael-Cleary

The Michael Gary Furniture collection is inspired by designs as diverse as classic Greek and Roman form, French Deco and African Tribal Art; taking the best designs from the past and reinterpreting them for today. Each piece is produced individually in Michigan, the birthplace of fine quality wood furniture.

Suite 401, 202.488.9787



Pindler & Pindler

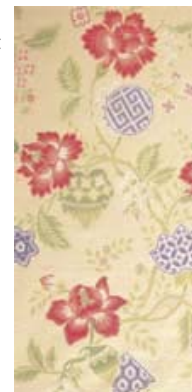
Fresh, fashion-forward color palettes have been added to Pindler & Pindler's Signature Exclusive Hearst Castle Collection. Pindler & Pindler continues to tell the story of William Randolph Hearst's passion for all things beautiful through this addition. The 22 new designs are reflective of the grandeur, luxury, wonder and mystique of Hearst's famous castle, nestled in the hills above the California coast. Visit the Pindler & Pindler showroom in suite 520 to view the entire collection.

Suite 520, 202.488.1805

Scalamandre

Scalamandre's latest 2006 collection, INDOCHINE, draws its colors and designs from tropical Southeast Asia. The collection's color palette is an intoxicating melee of orchids, fresh bamboo greens, papaya, jades, fuschias and turquoise lagoons with touches of lemongrass and ginger. Please stop by and receive your personal tour of this exciting collection.

Suite 740, 202.554.8860



F. Schumacher & Co.

"O to be a dragon, a symbol of the power of Heaven."—Marianne Moore

Schumacher brings you a little piece of heaven with Chiang Mai Dragon, an exotic oriental print with an Art Deco look. This design originated from a 1920's block print which was unearthed from an English archive and features stylized Asian flowers and trees with illuminated lanterns and, of course, a bold and majestic



dragon. Chiang Mai Dragon, printed on the finest English linen is available in four striking colorways.

Suite 523, 202.646.0610

Stark Carpet/ Old World Weavers

Stark does contract! Contrary to the pre-conceived notion that Stark Carpet only does residential carpet ... they do a large amount of contract work. Local projects include Constitution Hall (pictured), Renwick Gallery, Sommerset House I Condominiums, Smithsonian Portrait Gallery, etc. Although Stark specializes in custom Axminsters and custom Computer Yarn Placement designs, they also furnish running line contract qualities. See a sales rep. for details.

Suite 726, 202.484.4562



classically elegant and boundlessly sophisticated, to complement the windows that surround you.

Kravet is pleased to announce its entrance into the quickly expanding field of upholstered beds and bedroom furniture with the stunning Boudoir Collection. Highlighting this collection are seven, exclusive beds designed by eclectic designer, Larry Laslo. The upholstered bed in the Boudoir Collection offer a softer, subtler alternative to the raw, metallic or heavily carved wooden beds that have been prominent in design over the last few years.



Designed in the classically modern style, the seven beds in the Boudoir Collection range from elaborately shaped and embellished to aesthetically spare.

Suite 540, 202.479.0144

Lee Jofa

Over the last thirty years, the name "Tribeca"—short for Triangle Below Canal—has come to signify the kind of artsy, bohemian lifestyle for which lower Manhattan is known.



Groundworks has fashioned an exclusive fabric collection called Tribeca. Filled with vital geometrical patterns, both fluid and angular, these modern, richly-rendered fabrics will give any space an air and eloquence to rival that well known corner of the world.



Robert Allen/Beacon Hill

Gorgeous color palettes and plush textures address an array of design styles in the Robert Allen Color Library Spring 2006 collections of upholstery and multi-purpose fabrics. Five complementary color stories, Hibiscus, Surf, Sun, Lemongrass and Java, give an uplifting feeling of spring to the upholstery collections. The design options multiply with Robert Allen Color Library's multi-purpose collections for Spring, a four-book set of coordinating colors: Hibiscus-Shell-Papaya, Surf-Oasis-Breeze, Lemongrass-Palm-Sprout and Sun-Zest-Meringue. Fashion-influenced exclusive designs feature combinations of these sumptuous colors in a variety of inventive constructions. Transitional design and tasteful traditional offerings mix and match in these exciting new collections.

Suite 623, 202.863.0404



Willem Smith

Big can be beautiful. The all-new Opus 60 bureau is here.



Elegant, distinguished and—this is revolutionary—highly functional. How exciting! Be forewarned—whatever stuff you neatly store will feel so fashionable it

won't ever want to leave. See the Opus 60 bureau now at Willem Smith.

Suite 322, 202.554.9600

[Kitchen & Bath News >>>](#)



VOLUME 12 • ISSUE 3 • JUNE 2006
300 D STREET, SW, WASHINGTON, DC 20024 • 202.646.6100

KITCHEN & BATH BUILDING CENTER
Open to the Public and Trade • Monday-Friday, 9 a.m. - 5 p.m. • Saturday, 10 a.m. - 3 p.m. • www.kitchenbathcenter.com

DeZahra

All limestone is not created the same. Come discover the unique properties of DeZahra's exclusive Tunisian limestone, which has been held secret by the Italians for years. Italians have been one of the largest exporters in the world of stone; however, they have held the best for themselves, including the Grey Foussana, Imperial Beige and Beige Thala.

DeZahra has a limited stock of this extraordinarily dense and beautiful limestone, so be sure to reserve your orders now.
Suite C24, 202.234.7287



Foremost Appliances

Can a kitchen be both powerful and beautiful? Foremost Appliances is now showcasing Jenn-Air® kitchen products in both the Pro-Style® and Euro-Style Stainless. For a commercial quality kitchen with all the power and control of a master chef, the Jenn-Air® Pro-Style® Stainless collection is an obvious choice. With European elegance, Jenn-Air® Euro-Style Stainless appliances offer refined sophistication for the most selective tastes.

Suite C01 & C19, 202.646.0884



Paris Ceramics

Paris Ceramics is known for their unrivaled ancient and modern limestones, marbles and terra cottas. Paris Ceramics' antique black and white Spanish marble is classically elegant and alive with rich patina that comes from decades of wear and tear in European manor houses and could never be duplicated on a newly quarried stone. To learn more about antique black and white Spanish marble and to see a sampling of the collection, visit the Paris Ceramics' showroom, or www.parisceramics.com.
Suite C23, 202.554.3500

[Home](#) | [Features](#) | [Wrap Ups](#) | [Showroom Announcements](#) | [Kitchen & Bath Center](#) | [Event Calendar](#)



VOLUME 12 • ISSUE 3 • JUNE 2006
300 D STREET, SW, WASHINGTON, DC 20024 • 202.646.6100

AVAILABLE POSITIONS

FURNITURE SALES MANAGER

DSA Associates, Suite 301

DSA Associates, a well-established showroom in the Washington Design Center is seeking an individual with a minimum of two years of high-end furniture sales to manage our showroom operations. The candidate must be extremely detail oriented and have strong customer service and computer skills. If you would like to grow with our company, please fax your resume to 202-484-0070 or e-mail info@dsaassociates.com. No phone calls please.

INTERIOR DESIGNER

Ebanista, Suite 137

Ebanista, Inc., has an immediate opening for an Interior Designer. Must have previous experience in residential design. Ebanista offers a base salary, commission, medical benefits, expenses and an excellent opportunity for growth. Contact: Sanja Najja 202.484.5200, phone 202.484.5550, fax 202.484.5550.

INVENTORY COORDINATOR

Robert Allen/Beacon Hill, Suite 623

Contributes to the accuracy of showroom inventory by performing a variety of receiving and transporting responsibilities including receiving and recording incoming merchandise, unpacking merchandise and placing merchandise on the showroom floor according to visual merchandising plans. Also ensures showroom merchandise, as well as the showroom floor, is organized and clean. Qualifications include two years experience in shipping/receiving, inventory or other related roles. Must have strong customer service orientation as well

as the demonstrated ability to prioritize and handle multiple tasks. Some computer experience desired but not required. Must be able to lift 70 pounds on a regular basis. Competitive salary and benefits. Interested candidates should apply by resume to: Barbara Jackson, Beacon Hill/Robert Allen Showroom, 300 D St. SW., #623, 617.348.4260, 617.348.4297, bjackson@robertalldesign.com.

LIBRARIAN

Cowtan & Tout, Suite 423

Cowtan & Tout is seeking a librarian. The schedule would be Monday through Friday, 11a.m. to 4 p.m. Those interested should contact Carol at 202.863.8490.

OUTSIDE SALES REPRESENTATIVE

Ebanista, Suite 137

Ebanista, Inc., has an immediate opening for an outside sales representative to call on interior designers in the surrounding area. Must have previous experience in high-end furniture and fabric sales. Ebanista offers a base salary, commission, medical benefits, expenses and an excellent opportunity for growth. Contact: Sanja Najja 202.484.5200, phone 202.484.5550, fax 202.484.5550.

PART-TIME SHOWROOM WORK

Henredon Interior Design Showroom, Suite 225

Miscellaneous showroom work and projects. Flexible hours. Please contact Diane Urich 202.554.3340 or e-mail: durich@henredon.com.

PART-TIME SALES POSITION

Pindler & Pindler, Suite 520

Pindler & Pindler, Inc., is looking for a part-times sales associate. Duties include, but are not limited to, checking product samples in/out, maintaining/moving

product samples, processing customer orders, stock inquiries, taking inventory, etc. Experience within the interior design industry a plus, but not required. Relies on instructions and pre-established guidelines to perform the functions of the job. The sales associate will work under immediate supervision of the showroom manager. Compensation is hourly. Fax resumes to 202.488.9080, e-mail washingtondc@pindlercorp.com, or drop off your resume at our showroom in suite 520 of The Washington Design Center.

SALES ASSOCIATES POSITION

Brunschwig & Fils, Suite 420

Brunschwig & Fils is looking for a sales associate for the front desk area. Those interested should fax their resume to Karen Verenes/Yoshi Monterio at 202.554.4393.

Henredon Interior Design Showroom, Suite 225

Looking for a bright, energetic furniture sales person. Must have strong math skills and be a team player! Unlimited earning potential. Fax resume to 202.554.2248 or e-mail resume to durich@henredon.com.

Lee Jofa, Suite 518

Sales associate position available. Candidate must be personable, proactive and computer literate and have a passion for the high-end textile/furniture industry. Please fax resumes to 202.646.0212.

Osborne & Little, Suite 435

Interested candidates should be dedicated self-starters who possess excellent sales, communication, customer service and computer skills. Product and industry knowledge is a plus. Excellent benefits including med/den, matching 401k, product discounts, etc. To be considered for the position please fax resumé to showroom manager at 202.554.8808 or send via e-mail to bakerm@oalusa.com.

EVENT CALENDAR

WDC WELCOMES

MONDAY, Building Closed—Labor Day
SEPTEMBER 4 Holiday

THURSDAY, Fall 2006 *Metropolitan Home*
SEPTEMBER 21 Design House Press Preview
Day

THURSDAY, Fall 2006 *Metropolitan Home*
SEPTEMBER 28 Design House Opening
Party, by invitation only. For
more information, please call
202.646.6114.

FRIDAY, SEPTEMBER 29 Fall 2006 *Metropolitan Home*
Design House open to the
public during regular
business hours.

TUESDAY, OCTOBER 10 Design Lecture Series:
Nancy Corzine

SATURDAY, Fall 2006 *Metropolitan Home*
OCTOBER 14 Design House Consumer
Day. For more information,
please call 202.646.6114.

OCTOBER 16-22 High Point International
Furnishings Market, High
Point, North Carolina.

SATURDAY, Fall 2006 *Metropolitan Home*
DECEMBER 16 Design House closes.

AmericanEye,
Suite 511

Americaneye is pleased to announce an addition! Elizabeth Layser is joining the team. Elizabeth will help with all your order process questions as well as many other details! Her focus will help us all service the design community with the attention it deserves.

Brunschwig & Fils,
Suite 420

Brunschwig & Fils is sad to announce that Amy Spalding will be leaving the Washington, DC showroom in pursuit of a job in Chicago. Spalding joined the Brunschwig & Fils team in August of 2004 as a sales associate and has since been a valuable asset in the daily operations of the Washington, DC showroom. All will miss her, but wish her the best of luck in her future endeavors!

J. Asher,
Suite 510

J. Asher proudly welcomes to its staff Jen Chappell, who brings years of sales and management experience in interior design, fine art and photography.

Osborne & Little,
Suite 435

Please welcome new Sales Associate Porcia deDios to O&L. Porcia comes from Hinson and Co. and brings to the table more than two years of sales experience. O&L is delighted to have her as part of the staff. Please stop in and say hello to Porcia!

[Home](#) | [Features](#) | [Wrap Ups](#) | [Showroom Announcements](#) | [Kitchen & Bath Center](#) | [Event Calendar](#)