

If you experience difficulties with viewing this HTML E-mail, please follow this link:
http://www.merchandisemart.com/dcdesigncenter/eblast/eb_wdc_onsite_trd_05424_041906



VOLUME 12 • ISSUE 2 • APRIL 2006
 300 D STREET, SW, WASHINGTON DC 20024 • 202.646.6100

THE WASHINGTON DESIGN CENTER
WASHINGTON SPACES
DESIGN HOUSE
 SPRING 2006

Spring 2006 Designers for
 Washington Spaces
 Design House Debuted

The Washington Design Center opened the

Washington Spaces Spring 2006 Design House on April 17 and is being touted as one the best design houses ever.

This interior design showcase features inspirations from ten of the area's top design talent as they depict their own unique "Washington space."



ENTRY SPACE

Alex Infigardi,
 Patterson Design Group

LIVING SPACE

Ernesto M. Santalla,
 Studio Santalla

DINING SPACE

Alice Busch,
 Great Falls Distinctive Interiors

GEORGETOWN SPACE

Dana E. Tydings,
 Tydings Design Inc.

ADULT SPACE

Dennese Guadeloupe Rojas,
 Interiors By Design

BEDROOM SPACE

Matt Swingly,
 McMaster Wallace Interiors

LOUNGE SPACE

Deborah Wiener,
 Designing Solutions

URBAN SPACE

Susan Gulick,
 Susan Gulick Interiors

WEEKEND SPACE

Joseph Ireland and Julie Weber,
 J.D. Ireland

OUTSIDE SPACE

Charles & Betsy Owen,
 Fine Landscapes Limited

What Makes The Washington
 Design Center So Fabulous?

By Julia Chappell

In the month since I started as Director of Marketing at The Washington Design Center, I've learned a great deal about the vibrant design community, rich culture and historic precedent of this sprawling metropolis. Perhaps the most important thing I've learned is that The Washington Design Center is a cornerstone in the design community and we all must embrace and cherish this magnificent mecca of fashion, style, elegance, innovation, sophistication and couture.

The showrooms that are housed within the 500,000+ square feet forge the frontier for home fashion in the community. The WDC has an impressive array of the world's most luxurious home décor brands, which are supported by a knowledgeable cast of showroom managers and professionals. Please take a fresh look at all of the opportunities we have as a collection of industry innovators so we can work together and build upon this great foundation.

With a brand new marketing team: Director, Manager and Coordinator, we are ready and willing to support the initiatives of the showrooms. Please continue to utilize the OnSite newsletter, different event participation including Fabric Fair, Design House, and Treasure Hunt, and other WDC resources to help facilitate these marketing initiatives. Most recently, the WDC marketing department has given the OnSite newsletter a "facelift", in order to strengthen and better communicate the message of the design center...beauty and luxury.

That being said, as a marketing practitioner I couldn't ask for a more beautiful scenario—a FABULOUS center which houses FABULOUS showrooms and is supported by FABULOUS professionals. By working together we can make it even more fabulous!

[Featured Articles >>>](#)

CONTENTS

- [Feature Articles](#)
- [Showroom Announcements](#)
- [Kitchen & Bath News](#)
- [Event Calendar](#)



[Home](#) | [Features](#) | [Showroom Announcements](#) | [Kitchen & Bath Center](#) | [Event Calendar](#)

This is an advertisement. If you would like to be removed from this list, please forward the e-mail you received (include the e-mail address to be removed) to: remove_wdc@mmart.com or call 800.677.6278.

Merchandise Mart Properties, Inc.
 Suite 470, The Merchandise Mart,
 Chicago, IL 60654



VOLUME 12 • ISSUE 2 • APRIL 2006
 300 D STREET, SW, WASHINGTON DC 20024 • 202.646.6100

FABULOUS FEATURES

Dine & Design at the 7th Annual Capital Cooks!



Dine and design with The Washington Design Center and *HOME & DESIGN* magazine at the **7th Annual Capital Cooks!** This culinary fundraising event will be held on **Wednesday, May 3rd, 2006 from 6:00 - 8:00 p.m.** Bring your clients and watch the city's most chic restaurants prepare signature hors d'oeuvres in the luxurious showrooms of The Kitchen, Bath and Building Design Center.

This year's participating restaurants include *Andale, Bistro Bis & Vidalia, Charlie Palmer Steak, Dupont Grille, 4th Estate at the National Press Club, Morrison*

Clark, Oceanaire, Ristorante Luigino, Seacatch, The Melting Pot, The Oval Room and Galileo and Coeur de Lion. Tickets are \$55 per person or \$100 per couple with a portion of the proceeds to benefit the Capital Area Foodbank, the largest public, nonprofit food and nutrition education resource in the Washington Metropolitan area. The Capital Area Food Bank, founded in 1980, distributes millions of pounds of food every year to hundreds of member agencies. These member agencies include soup kitchens, shelters, day care centers, elder care facilities, youth programs and faith-based organizations.

For more information, please visit capitalareafoodbank.org. This event is co-sponsored by The Washington Design Center and *HOME & DESIGN* magazine.

For more information or to purchase ticket, please call 202-646-6114 or visit our website at merchandisemart.com/dcdesigncenter.



Farrow & Ball Introduces the Ringwold Papers

Farrow & Ball celebrate their expertise and dedication to craftsmanship with the launch of their latest two-colour print wallpaper. Based on an early eighteenth century silk pattern by James Leman, the 'Ringwold Papers' have been sympathetically adapted by Farrow & Ball to create a stunning wallpaper, with an impressive 35" repeat.

This stylized, delicate sprig and berry design has elegant winding branches and two-tone variegated leaves, providing a sophisticated backdrop for both traditional and contemporary interiors.



"With influences taken from the near and far east 'The Ringwold Papers' comprises a historical damask design. Originally designed as a woven textile for

couture dresses and elaborate gentleman's waistcoats, it translates well into an exquisite paper," explains Tom Helme, Director.



The new collection has the Farrow & Ball hallmark depth of colour, only achieved through the combination of traditional printing methods and their finest water based paints as opposed to

modern printers' inks. Available in all five of the Farrow & Ball colour families, this two-colour print is offered on both complementary and related tonal grounds. With 48 colour combinations, including a selection of new colourways, 'The Ringwold Papers' present a captivating addition to the Farrow & Ball paper library, celebrating their success with big repeat patterns. **Suite 622, 202.479.6780**

A New Year, A New Name, A Continued Commitment to You.

Design Center Carpets is now "Doing Business As" J. ASHER, a name change that honors the company's founder J. Asher Bremen, and his 50 years of experience in fine carpeting and rugs. Mr. Bremen began his

Washington Spaces Consumer Day

The Kitchen and Bath Building Design Center will host **Washington Spaces Consumer Day** on **Saturday, May 13, 2006 from 10:00 a.m.- 3:00 p.m.**

career as a teenager in his family's rug manufacturing company dyeing fibers and designing rugs. He went on to work in sales, design and management positions for many major carpet companies before co-founding Design Center Carpets in 1983.



Since then, J. ASHER has evolved from a provider of moderately priced broadloom carpets to a leader in the high-end luxury market. The collection now includes the finest made-to-order handwoven carpets and rugs, as well as wiltons, axminsters and tufted carpets. Today, J. Asher's offerings include distinguished names such as Tufenkian Artisan Carpets, Atelier Lapchi, Asmara and Megerian, as well as J. Asher's Private collection of carpets from Nepal, Egypt, India, Pakistan, Armenia, Romania and China.

In April, J. Asher will open their Atelier Lapchi and Asmara Galleries as a complement to their Tufenkian Artisan

Carpets Gallery. These top-of-the-line manufacturers have made J. Asher their home in the Washington region, a choice that reflects their reputation and market position.

J. Asher remains committed to providing discriminating designers and their clients with unparalleled service and the highest-quality product. When it comes to hand-woven carpets and rugs, J. Asher is now the new benchmark. Suite 510, 202.646.1300

in partnership with WASHINGTON SPACES magazine. The day will be filled with lectures,



innovative product demonstrations and displays, the latest in kitchen and bath trends and how-to seminars.

The Consumer Day is a wonderful opportunity to get acquainted with the products available through **The Kitchen and Bath Building Design Center** showrooms and to ask Design House designers about their inspiring rooms. Admission is free and open to the public. Please phone 202.646.6114 for more information or visit kitchenbathcenter.com.

Farrow & Ball May 3rd, 2006

'Colour' an inspirational talk and illustration on how to transform your home through the simple use of colour and achieve striking results. Hosted by Joa Studholme, Colour Consultant to Farrow & Ball. Traditional English Tea will be served following the presentation. Guests will receive a complimentary Farrow & Ball goodie bag. Suite 622

[Showroom Announcements >>>](#)

[Home](#) | [Features](#) | [Showroom Announcements](#) | [Kitchen & Bath Center](#) | [Event Calendar](#)



VOLUME 12 • ISSUE 2 • APRIL 2006
 300 D STREET, SW, WASHINGTON DC 20024 • 202.646.6100

WHAT'S NEW



AmericanEye

AmericanEye brightens up for the spring season. Stop in and see the new Lee industries L-3915-02 Settee. It has been upholstered in a Lee Leather Stampede Oxblood and with nickel nail heads and casters. It is a jolt of color that will work in any of the new traditional/modern spaces. This frame also comes as a Neo Wing Chair that is dining height. Other new frames include new pieces from the McAlpine Home collection for Lee Industries.

In case you have not heard, AmericanEye now represents Simon Pierce. This beautiful collection of hand blown American made glass is a traditional gift for the Spring Holidays. What mom, graduate, bride, or lucky significant other would not be pleased with a hand made gift. New lighting designs from Jamie Young and Currey & Company will be available for those clients that need some "instant gratification", and you can be the first in the area!

Spring also means the start of the Baseball season. Stop in and see the unique collection of baseball memorabilia AmericanEye has collected. Start a new collection to salute the new Nationals! **Suite 511, 202.554.5744**



Croce, Inc.

Clarence House is proud to present their first outdoor collection along with their spring line, while Travers features the De La Cuona collection. Phillip Jeffries has beautiful new silk, grass cloth and raffia wall coverings, which are great for the spring and summer. As well, Samarcand, Hazelton House, Anna French and Roger Arlington have wonderful new spring lines that you should come and see. **Suite 619, 202.863.2291**

Donghia

Donghia's second stop is Greenland; the largest island in the world, where we encounter PISCES, a sea of vibrantly colored fish.

This figurative jacquard offers a whimsical twist to native Nordic drawings. PISCES, a reversible cotton textile, can make a bold, color statement or choose the ecru with brightly outlined fish for a quieter touch. Available in eight color-ways, these fish make the perfect catch any day!

Donghia understands the power and drama of old world craftsmanship and how to use it in unexpected ways. INTAGLIO, the firm's latest patterned weave, mimics the surface effects found in an ancient printing process of the same name. By combining cotton, linen, silk and viscose in a damask weave, this monochromatic textile gives the illusion of high/low relief, reminiscent of Victorian tin ceilings. The all-over pattern is rendered in a range of eight jewel-toned colors that move from deep, suberring to vivid green.



Edelman Leather

Edelman is reviving two old leathers from the archives: a python and a genuine shrunken leather. Each piece is also available as leather floor tiles, which are amazing! With colors, textures, and leathers from the past, this is not a worn leather story. It's a distressed leather story and finally, a luxury leather story! Available from the New/Old collection. **Suite 708, 202.488.1822**



F. Schumacher & Co.

Schumacher's having a hair wave! Schumacher sizzles with Plein Air redux. Sublimely radiant and durable as a summer's day is long, Schumacher's new outdoor line of sun and weather resistant fabrics harmonize easily for indoor and outdoor use. Lightfast and stain repellent, these brightly coordinating patterns come in a range of fresh colorways representative of Mother Nature's finest. All of Plein Air fabrics are made of 100 percent Dralon acrylic and are machine washable. Visit suite 523 to see why the sun never sets on Schumacher. **Suite 523, 202.415.3955**

Fabricut at J. Lambeth



Just in time for spring, Fabricut presents their new Sunbrella collection, Sunsations! Sunsations boats whimsical and bold patterns in color palettes ranging from fresh pastels to classic primaries. Stain resistant, fade proof, mildew resistant, and durable, with a

ARC-COM FABRICS

Arc-Com Fabrics expands its Woven Crypton® collection with the introductions of Symphony and Rhythm. A contemporary large-scale pattern, Symphony offers a vibrant palette including warm rusts, bright greens and vivid blues perfect for any hospitality application. A multi-colored stripe, Rhythm is available in a kaleidoscope of colors and is suitable for multi-market use. **Suite 506, 202.863-2900**

Robert Allen/Beacon Hill

A combination of inviting neutrals and warm, soft tones, Beacon Hill's new Delano collection captures the essence of refined elegance. Butter, Coin, Pewter, and Citrine

are infused with bright accents and a subtle sheen that emphasizes the rich quality of the tones. The new upholstery collection features designs including ikats, plaids, silk velvets, abstract geometrics, floral, and novelty designs. These distinctive wovens have an alluring sophistication that is equally classic and transitional. **Suite 623, 202.863.0404**



Brown Jordan

Brown Jordan celebrates 60 years of simple elegance! Take advantage of an additional discount through the month of March and furnish your clients outdoor spaces with the simple elegance that is Brown Jordan. **Suite 601, 202.554.2875**

Century Designer Showroom

As spring begins its arrival, thoughts turn to warmer temperatures and looking ahead to summer pleasures. Century has expanded its leisure offerings and you must see their newest additions. Everything from Oscar de la Renta's casual Punta Cana collection to Richard Frnier's zen-like Kyoto collection to the finest garden style Chatsworth collection, Century has a wide range on the showroom floor for all to peruse and plan for their summer months. **Suite 609, 202.488.4400**

Cowtan & Tout

New this season from Jane Churchill, the Fairfax Velvets collection, a contemporary range of velvets in five striking designs featuring textured velvet motifs on unbleached linen. From chunky dots to multi-stripe, damask and leave, this range has a glamorous depth that looks great on curtains, cushions and light upholstery.

The very heart of Jane Churchill, the Kempton Check & Stripe collection is an exciting new collection of checks and stripes in smart blue and reds as well as fresh greens, yellows and pinks. This range is now fully machine-washable making it easy-to-care for and versatile to use. **Suite 423, 202.863.8490**



move from deep aubergine to vivid green.



Donghia has taken the romance and splendor of the past and transformed them into the simplicity and clarity of the moment with the textile. **Suite 503, 202.479-2724**

Duralee Fabrics

Duralee has unveiled Pavilion, a collection of indoor/outdoor fabrics consisting of vibrant, color coordinated prints, weaves and trimmings offered in a seven-book set. Created from a variety of specialty fibers including Sunbrella®, Weatherwise® and Teflon®.



Pavilion fabrics are engineered for practicality. Features include resistance to moisture, water, mildew, fading, staining, and abrasion.

Duralee Pavilion products are resilient, while remaining soft, easy to care for, and quick to dry. Designed with the quality, durability, and value that you'd expect from Duralee, the Duralee Pavilion fabric collection can enhance any room in the house, as well as poolside, patio, sunroom and other outdoor living spaces.

Highland Court has recently released an assortment of silk Trimmings in a four-book set, enclosed in new and original packaging, with 16 eye-catching color combinations and 198 options. The collection is categorized into four groups to reflect the changing seasons: natural winter (celadon, champagne, black olive, and black/crème), warm, saturated spring shades (tangerine, rose/green, antique and citron), cool, relaxing summer hues (aqua, primary, blue/yellow, and turquoise/cocoa), and deep fall tones (sage/cinnamon, merlot, red pepper, and green/red). Highland Court Trimmings offers exclusive styles to adorn the most beautiful of fabrics. **Suite 317, 202.646.1282**



Ebanista



In addition to its superb line of handcrafted antique reproduction furnishings,

variety of uses that work from the dining room all the way to the sunroom! **Suite 221, 202.646.0815**



Grange

Grange introduces the Soleil de Minuit collection, which showcases expertly hand-crafted sun-ray veneer. The elegant, contemporary collection brings attention to the beautiful cherry wood grain and savoir-faire of Grange craftsmanship. **Suite 521, 202.488.0955**

Henredon

The dust has settled at the Henredon showroom, and they are pleased to announce the newly remodeled Barbara Barry Realized by Henredon. The space is complete and truly exquisite. Henredon invites you to come and preview this unique and comprehensive offering that fully expresses Barbara Barry's vision and her commitment as a designer to enhance people's lives. **Suite 225, 202.554.3340**



Holly Hunt DC

Holly Hunt DC is pleased to introduce Sutherland's nautical precision and architectural simplicity. This is blended seamlessly in the new Camano collection designed by Terry Hunziker. The generous proportions of the lounge chair, ottoman, loveseat and sofa invite retreat and reflection. This newest offering of updated classics from Sutherland comes in three versions: Yachting, Deck and Beachfront. The Yachting furniture group combines teak, well known for outdoor durability, with textured powder coat aluminum in three beautiful colors— Chalk, Sand Dollar and Storm. The Deck pieces are crafted of solid teak, which may be specified in Natural, Weathered or Dark Sealer. Camano Beachfront is a groundbreaking introduction for Sutherland because it is rendered in a marinegrade enameled mahogany, available in a choice of four exclusive colors—Dusk, Whitecap, Madrona and Cedar. Terry Hunziker's designs for Sutherland complement modern architectural structures and evoke feelings of serenity and calm, as evident in this latest grouping with its naturally



Ebanista has begun carrying a couture collection of pillows and fabrics imported from all over the world. **Suite 137, 202.484.5200**

warm tones, subtly carved lines and commodious sizes that invite sharing. **Suite 719, 202.554.2910**

Houlès



Delightful...is the word that best describes Houlès' newest Nico Décor Trimming Collection. Houlès is tinkled pink to introduce Naomi, a bright and cheery mini-collection featuring jewel inspired tie-backs, a beaded fringe and cording in 16 fun colorways!

The Naomi collection includes four unique tie-backs—a cabled tie-back with a geometric sliding ring, a two-tassel tieback with conical molds, and a neat beaded tie-back. A fourth tie-back is a stunner and is realized with only geometric molds! This collection is sure to be a bright and clever addition to any modern décor. Please stop by Houlès to see the entire new collection!

Traditional and luxurious, featuring hexagonal pendant quilts, the Marly Trimmings Collection recalls the stylish romance of the 1940's. It effortlessly complements classic and contemporary fabrics and showcases twenty warm and sophisticated colorways. **Suite 404, 202.488.1621**



J.Asher/Design Center Carpets

J. ASHER proudly announces its Atelier Lapchi Gallery opening on Wednesday, April 5, 2006 to be celebrated with a 12:00 p.m. presentation by art historian Armando Villesenor on the inspirational origins and historical context of the Lapchi Textile collection and the Complimentary Ngarri collections. A luncheon will follow the presentation in suite 510. R.S.V.P. required no later than March 29, 2006. **Suite 510, 202.646.1300**

J. Lambeth & Co.



J Robert Scott announces 'Kipling Leather', a wonderful companion to their industry dominant



Julia Gray

Roll over and discover the room you've always envisioned. You'll find sumptuous Louis XV and XVI styles, tastefully interpreted Sheraton, neoclassical, regency and belle époque pieces. Cane, upholstery, antiqued mirror and unique hand painted decoration, the choices will inspire. You can flirt with modern adaptations or embrace tradition. Your Julia Gray bed will create the place you want to be. Live a little—wake up in your dream. **Suite 408, 202.554.602**



Kravet

Kravet is pleased to announce more additions to Kravetcarpet. Beautiful wool and silks in traditional, transitional and modern motifs. Please drop by the Kravet showroom in suite 540 and have Georgia or Joyce show you the new Kravet carpet. **Suite 540, 202.479.0144**

Lee Jofa

Over the last thirty years, the name "Tribeca"—short for Triangle Below Canal—has come to signify the kind of artsy, bohemian lifestyle for which lower Manhattan is known. Groundworks has fashioned an exclusive fabric collection called Tribeca. Filled with vital geometrical patterns, both fluid and angular, these modern, richly-rendered fabrics will give any space an air and eloquence to rival that well-known corner of the world.



With five stunning prints and twice as many weaves, this collection presents as splendid

Pugrant Associates

Pugrant Associates presents transitional curio cabinets by Woodland. This is just one of Pugrant's new collections from Woodland furniture. With over 65 different finishes to choose from, Pugrant offers complete customization of most pieces in the many selections offered. Come and see the new pieces at Pugrant Associates. **Suite 209, 202.863.0050**

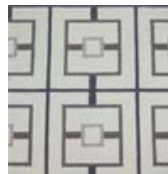


Niermann Weeks

Nancy Corzine introduces the Amalfi Coast Collection, a coordinated group of upholstery, curtain, paper-backed and accent pillow fabrics in elegant, muted colorways that complement any interior. **Suite 701, 202.488.1220**

Stark Carpet

Hand tufted, hand tufted! This contemporary hand tufted design SA161173 illustrates the versatility of Stark Carpet's artisans. Stark Carpet can create any design from contemporary to traditional. Stark Carpet's hand-tufted rugs adorn the Blue Room at the White House, the Ronald Reagan Oval Office and George Washington's Mt. Vernon. Let Paige Goodman, staff artist, work with you to create a masterpiece for your floor.



Stark Wallcovering is pleased to announce the addition of the Allegra Hicks and David Oliver wallcovering lines to Stark Carpet's offering. Tarantella and Tulip are just two examples of the youthful, modern designs available in these collections. **Suite 726, 202.484.4566**



Stroheim & Romann/JAB

Jazzy brights from Stroheim's Modern Gallery work together in sharp counterpoint in this modern living room. The sofa is upholstered in Retro Boxes, while Zsa Zsa covers the chair. The Allegro Stripe on the draperies and Petal Check on the pillows add lively accents. **Suite 120.**



industry dominant 'Superkidskin'. Kipling leather delivers exceptional durability & quality, but in BRIGHT Colors you might not expect from J Robert Scott. It is ideal for use in hospitality or residential

environments. Colors: Apple Green, Canary Yellow, Sky Blue, Sunset & Sherbet as shown on the chair.

Singing Beach from Vervain is an elegant sophisticated design made up of 1,000 shells hand drawn and colored from shells gathered on a decade of beach vacations. The textile literally sings with the scope of life, a celebration of distant times and treasured summer vacations. Singing Beach will be used for interiors on the seaside and deep in the mainland because of its elegant rendering and sophistication. **Suite 117, 202.646.1774**



unity of flair and artistic vision. **Suite 518, 202.863.1300**

Michael-Cleary

Michael-Cleary is delighted to introduce "el", the environmental language collection, with all materials 100 percent biodegradable. A clean, refined aesthetic, offers a fresh approach to celebrate the design and materials. **Suite 401, 202.488-9787**



Pindler & Pindler, Inc.

Pindler & Pindler continues to tell the story of William Randolph Hearst's passion for all things beautiful. The 4th addition was recently added to Pindler & Pindler's Signature Exclusive Hearst Castle collection. **Suite 520, 202.488.1805**

WILLEM SMITH
202.484.4562

WILLEM SMITH

CREATE YOUR OWN! Stemming from the base of the Hibiscus Table, WILLEM SMITH will now work with you to create your own masterpiece. Customize your tabletop design, color and size while keeping the original bronze details and solid maple legs you fell in love with at the beginning. **Suite 322, 202.554.9600**



[Kitchen & Bath News >>>](#)



VOLUME 12 • ISSUE 2 • APRIL 2006
 300 D STREET, SW, WASHINGTON DC 20024 • 202.646.6100

KITCHEN & BATH BUILDING CENTER
 Open to the Public and Trade • Monday-Friday, 9 a.m. - 5 p.m. • Saturday, 10 a.m. - 3 p.m. • www.kitchenbathcenter.com



Architectural Ceramics

Architectural Ceramics is pleased to introduce Silestone. Silestone incorporates natural quartz with the strength and beauty you would expect from the leader in engineered stone. Fused with microban technology Silestone is certified by the NSF and meets all direct food contact requirements by the FDA. Scratch, stain and heat resistant, Silestone comes in 40 luscious colors, which are certain to keep your palate wet. Stop by Architectural Ceramics today to find out how you can get a free sink with your purchase. **Suite C10, 202.554-8719**

DeZahra



DeZahra's Encaustic Tiles revive an old style of decorative flooring typical of the Victorian and Edwardian eras. This method has been used for hundreds of years and can be found in many cathedrals from as

early as the 1600s. Made of cement, the colour and pattern of the tile are inlaid in a mold using different color clays, rather than as a surface glaze. Designs range from traditional to art deco and are easy to clean and very durable. DeZahra also has some beautiful reclaimed Encaustic floors. **Suite C24, 202.234.7287**



Haifa Inc.

Please join Haifa in New York City March 9th-12th at their display at the International Architectural Digest Show and discover the new and exciting stones premiering from Haifa Inc. Discover for yourself why Haifa Inc. truly does have "The World's Most Exceptional Stone." **Suite C18, 202.484.5104**



Nash Floor Company, Inc.



Paris Ceramics

Paris Ceramics is known for their unrivaled ancient and modern limestone and terracottas. Today, these unique and extraordinary stones and terracottas are even more within your reach! Paris Ceramics has opened a new manufacturing warehouse in Virginia. The national headquarters will also be moving to this new facility. With over four times the space of the current warehouse, Paris Ceramics will be able to stock more materials in the greater DC area. Paris Ceramic's clients in the DC metro area will benefit from quicker deliveries and lower shipping rates. **Suite C23, 202.554.3500**

Studio Snaidero D.C.

Studio Snaidero DC is pleased to announce that they now have audio equipment from Bang & Olufsen, as well as fine Italian furniture from Poltrona Franu in their showroom. Please visit Studio Snaidero for an enriching experience. **Suite C-20, 202.484.8066**



Foremost Appliances

The popularity of outdoor kitchens combined with the arrival of spring means many people will be headed outside to entertain and relax in their backyards. Visit Foremost Appliances to learn about the latest selection of outdoor grills and ranges from top manufacturers such as Viking. Models range in size and offer numerous features and components that are sure to fit your lifestyle. **Suites C01&C19, 202.646.0884**



[Home](#) | [Features](#) | [Showroom Announcements](#) | [Kitchen & Bath Center](#) | [Event Calendar](#)



VOLUME 12 • ISSUE 2 • APRIL 2006
300 D STREET, SW, WASHINGTON DC 20024 • 202.646.6100



WHAT'S HAPPENING

APRIL 27 - MAY 3

High Point International Furnishings Market
High Point, NC

WEDNESDAY, MAY 3

Capital Cooks!

Culinary fundraising event sponsored by HOME & DESIGN Magazine

Concourse level, 6:00 p.m. - 8:00 p.m.

By Invitation Only.

For more information please call 202.646.6114.

THURSDAY, MAY 4

Best-selling author Mary S. Lovell presents her new book, *Bess of Hardwick: Empire Builder*

By Invitation Only.

For more information please call 202.646.6114.

EMAIL CONNECTION

Receive the latest Design Center news including event information, showroom notices and special industry happenings. Register online today at www.merchandisemart.com/dcdesigncenter.

FRIDAY, MAY 12

ASID Symposium: *Designing for Inclusion: Autonomy for the LifeSpan*. Course #6423. 0.6 CEUs.

DC/MD Approved. 9:30 a.m. - 7:00 p.m. Doubletree Hotel, 1515 Rhode Island Ave., NW, Washington, DC Keynote Address presented by Patricia A. Moore, Ph.D.; "Wellness & Quality of Life Considerations" presented by Donna L. Wagner, Ph.D. and Christine M. MacDonnell; "Universal Design & Related Products" presented by Drue Lawlor, FASID; "Panel Discussion (with the four speakers)" moderated by Barbara Huelat, ASID, AAHID, IIDA; and Product Table Top Show with Networking Reception. Registration materials will be posted on www.asiddcmetro.org or can be requested by calling 202.488.4100 after February 20.

SATURDAY, MAY 13

Design House Consumer Day

Featuring seminars, lectures, product demonstrations, and displays. Free, 10:00 a.m. - 3:00 p.m.

Concourse level. Open to the public.

TUESDAY, MAY 16

Spring Design Lecture Series: Leslie D. Sadler

Editor Window and Wall Ideas magazine

By Invitation Only.

For more information please call 202.646.6114.

MONDAY, MAY 29

Building Closed – Memorial Day Holiday

[Home](#) | [Features](#) | [Showroom Announcements](#) | [Kitchen & Bath Center](#) | [Event Calendar](#)